



# The Visitor

April 2018

Bethlehem  
United Church of Christ

## Show Me Your Wounds

Rev. John Kennedy

One of the twelve disciples, Thomas (nicknamed the Twin), was not with the others when Jesus came. They told him, "We have seen the Lord!" But he replied, "I won't believe it unless I see the nail wounds in his hands, put my fingers into them, and place my hand into the wound in his side." Eight days later the disciples were together again, and this time Thomas was with them. The doors were locked; but suddenly, as before, Jesus was standing among them. "Peace be with you," he said. Then he said to Thomas, "Put your finger here, and look at my hands. Put your hand into the wound in my side. Don't be faithless any longer. Believe!" "My Lord and my God!" Thomas exclaimed. Then Jesus told him, "You believe because you have seen me. Blessed are those who believe without seeing me."

—John 20:19-31

Thank you to all those who made Holy Week such a meaningful and beautiful experience. The beautiful joy of Palm Sunday, "Hosanna in the highest!" The observance of the "Last Supper" on Maundy Thursday created an experience of being together in community, in a re-creation of the Upper Room, in the Gallery. We gathered around tables set with white cloths, palm branches, Mediterranean refreshments (olives, dates, pita bread, and wine/juice). We symbolically followed Jesus' mandate to love each other by caring for one another, by the washing of each other's hands. We heard Jesus' words of "his body broken for ours" and "his blood shed for ours," and we broke bread together and took turns (young and old) serving the loaf and the cup in the glow of the candlelight as did the disci-

(Continued on page 6)

### MAY Submission Deadline

Articles and photos need to be submitted by Tuesday, May 1, in order to be published in the May 6 Visitor.



### IN THIS ISSUE

Rev. John Kennedy	Page 1	Memorials & Gifts	Page 9
Flowers and Brunch	Page 2	Parish Records	Page 9
Stephen Ministry	Page 2	Finance & Scholarships	Page 9
President's Desk	Page 3	Work Day, Tigers, Radio	Page 10
Upcoming Events	Page 4-5	Outreach	Page 11
5 for 5 church	Page 7	Photos of events	Pages 12-13
Community Rewards	Page 8	Easter Flowers	Pages 14-15
Roundtable event	Page 8	Who We Are	Page 16



BETHLEHEM UNITED CHURCH OF CHRIST

423 S. Fourth Avenue, Ann Arbor, Michigan 48104

Phone 734-665-6149 Fax 734-665-3399



[www.bethlehem-ucc.org](http://www.bethlehem-ucc.org)

[www.facebook.com/bethlehemuccA2](https://www.facebook.com/bethlehemuccA2)

## MOTHER'S DAY FLOWERS

**Mother's Day is May 13.**

**Please help provide  
beautiful plants and trees  
for our church grounds and  
Bethlehem Cemetery  
in honor or memory of a loved one.**

***Please get us your information by  
Wednesday, May 2,  
so it can be listed in the bulletin.***

***A Mother's Day donation sheet  
will be available soon on the  
bulletin board near the office.***

Choose a monetary donation  
of any amount. **THIS YEAR**  
**your donations will go toward:**

1. Flowers and landscaping for the church grounds.
2. The purchase of 20 trees for the cemetery.

We will then buy flowers, plants, and landscaping suitable for the church grounds and the trees for the cemetery.

On Mother's Day, May 13, a selection of the flowers will be at each worship service, and a memorial and honorarium list will be in the bulletin.



Acclaim Images.com

## PALM SUNDAY BRUNCH

Our annual Palm Sunday brunch was another huge success. A **BIG thank-you** to all those who provided the wonderful selection of food; to Debbie Belcher for making her delicious pancakes again, manning the kitchen during church, and providing table games for each table; and to my wonderful team: Jan Eadie, Sue Irwin, Sue Muir, Kris and Scott Lovelace, and Tom Ziesemer for helping with the planning and working the day of the brunch.

Many, many thanks! Jane Z.



*Congratulations to Bethlehem's first cohort of  
Stephen Ministers: Liechen Escott, Jane Schmerberg, Eileen  
Koprowski, and Vicki Hoxie; as well as  
Bethlehem's Stephen Leaders: Lily Tinker Fortel,  
Pastor John Kennedy, and Kurt Schmerberg.*

# From Your President's Desk...

I always wondered about messages from pieces of furniture! If my desk \*could\* send a message, it would probably be, "Help, I'm drowning!" It's covered with a number of documents and notes about various aspects of Bethlehem Church. There's a pile of empty file folders. Perhaps the twain shall meet.



Despite having been in office less than two months, I can confidently say I've made a number of mistakes, and fear not: I shall make more! But in the meantime, please be assured I mean well and love Bethlehem.

In order to continue to be a Christian witness and presence in the downtown Ann Arbor area, leadership has begun to address a number of challenges and opportunities in our buildings. I firmly believe we'll be more effective, draw more members, and feel better about ourselves as we tick items, large and small, off our extensive to-do list.

Looking back at Leadership Council minutes, I see almost a year to the day as I write this that Council talked about the "list of needed improvements and decided to start with areas visible to visitors and where progress can be seen."

We've already seen two restrooms brought into the 21<sup>st</sup> century and have two more to quickly follow. (Well, as quickly as any remodeling project goes!) Members have been notified of a Congregational Meeting after worship on April 15 to hear annual reports and vote on whether to allow up to \$23,000 to be spent updating the women's restroom across from the office. (The men's room needs less work to be ADA compliant and doesn't require a special meeting to authorize spending its lesser cost.)

I joined Bethlehem right before Pastor Greg Smith passed away and believe I recall hearing each subsequent Pastor and Interim remark that our antiquated restrooms should be updated. It's great to see us spring into action!

But wait, there's more! Leadership Council has identified other projects as priorities alongside the continual maintenance and repairs our historic building requires. Council authorized bringing in Phoenix Contractors to prepare a plan to renovate our Willimann Fellowship Hall and surrounding area. As I write this, Phoenix is about to make its final presentation to a joint committee from Council and the Facilities Minis-

try Team. Watch for more on this project as leadership determines how best to use the plan (and how to pay for the work!).



Air conditioning is coming to the Sanctuary, in part because of a generous gift. Timing is everything in how that project and the renovation in the basement below are best done. Since "one person's ceiling is another's floor," the renovation and A/C projects touch a lot of that shared space, and coordinating efforts to do all the necessary work would allow bringing cool air down.

Why spend all this money? And why now? My grandpappy got along fine with his "funeral-home fan," and church basements are notorious for poor décor. (Isn't that somewhere in Acts of the Apostles?) First, we deserve it. I don't mean in a short-sighted, entitled way. I mean if we have attractive facilities, we will feel more at home, more energized, less like we're visiting a museum, and more like we're in a place where exciting things are happening.

And so will others. Not only will visitors be welcomed by attractive, up-to-date facilities, members of the community will want to make use of our space. And we won't give it away. One theme from last year's Leadership Council minutes is a "Rental Task Force." Individuals from Council and other Ministry Teams have been identified to clarify our rental rates, policies, and contracts and propose long-term plans to Council.

Already we are reaping the benefit of having a gymnasium as we rent space to the University of Michigan Nursing School's COPD program and to a downtown businessman running an individualized youth basketball training program. We are getting a good income from these two sources, and their contracts are year-long. There is no reason we should be apologetic or think it is somehow "un-Christian" to charge a fair fee for resources we pay to maintain.

I am not one to predict that those who rent our facilities will join Bethlehem church in droves. For example, a contract with a local group of home schoolers just ended as they could no longer afford to pay anything, and none of those families ever expressed interest in joining. What I do predict is that Bethlehem will become more of a "destination," and as folks do come, they may see our banners, our plaques, and our friendly faces and remember them when the conversation turns to, "Where's a good church?"



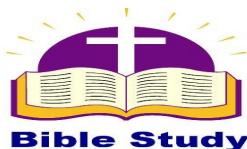
# Regular Monthly Events at Bethlehem



## BETHLEHEM PRAYER CIRCLE

**April 19 & May 3, 11:30–12:15**

*Join us in the lounge as we pray for our church, our community, our world.*



## MARY MARTHA BIBLE STUDY

**Tuesday, April 10**  
(2nd Tuesday of each month)  
**10:00 a.m. in the library**

## BETHLEHEM VETERANS' MONTHLY BREAKFAST



**May 4,**  
**8:30 a.m.,**  
**Classic Cup**  
**Café,**  
**Jackson Rd.**

## FRESH PRODUCE COLLECTION

**APRIL 15**

(every third Sunday until spring)

**Please bring your donations of fresh produce and place them on the altar at either service.**



## APRIL PRETZEL SCHEDULE

*Call 734-665-6149 to preorder.*

**HOLY ROLLERS:** Saturday, April 14  
Pretzel rolling begins at 9 a.m., sales from 10:30–12

**PARKING LOT PRETZELS:** Friday, April 27  
Pretzel rolling begins at 7 a.m., sales from 11-1



## AUXILIARY/MOTHERS' STUDY

**Thursday, April 19, 1:00 p.m. in the gallery**

Auxiliary/Mothers Study will assembly Bethlehem Bags for Mott Hospital at 1:00 p.m. on April 19. We will gather in the gallery to fill the bags for the parents of Mott Hospital patients.

These bags help parents fill time while their child is either sleeping or out of the room for treatments. There will be a bin in the library if anyone would like to make a donation.

Suggested items are: tooth brush/paste, dental floss, hand lotion, nail clippers/file, chap stick, notebook/journal and pen, playing cards, hard candy/snacks (individually wrapped), magazines, crossword puzzles/game books, or any small items you feel would be helpful.



**The Member Care Ministry Team**  
**presents: LifeChoices Senior Care Solutions**  
**Monday, April 23, 7–8 p.m. in the lounge**

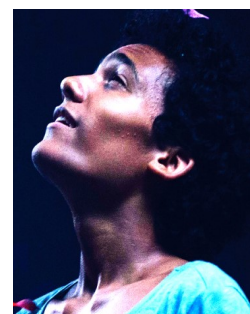
LifeChoicesAtHome.org for more information.

LifeChoices® is a membership program for individuals over 50 who want to maximize their health, guarantee their financial future against unexpected healthcare costs, and remain independent in their own homes.



**ONA Movie Night**  
**Thursday, April 19**  
**7:00 p.m., cinema room**

Please join us in the cinema room for *Saturday Church* about a 14-year-old boy struggling with gender identity and religion who begins to use fantasy to escape his life in the inner city and find his passion in the process. **Youth Group will join us after dinner.**



## HABITAT FOR HUMANITY SERVICE TRIP—FUNDRAISERS

Our 2018 Habitat for Humanity service trip is tentatively planned for sometime between June 19 and June 29. Final plans are in the works. Please help support this annual event by taking part in two upcoming fundraisers. Watch for more info to come.



**Sunday, April 22**

**Youth Mission Project Fundraiser**  
after 10 a.m. service in the Fellowship Hall

**Sunday, May 6**

**Fiesta Taco Bar and Habitat Cake Auction**  
after 10 a.m. service in the Fellowship Hall



## UPCOMING EVENTS IN THE COMMUNITY

**Tuesday, April 10, 17, 24**

Interfaith Round Table, April Discussion Series, 7-9 p.m. (see page 8)

**Fri.–Sat., April 27–28**

“The Political Jesus” conference in East Lansing

**Saturday, May 5**

Ann Arbor Youth Chorale Spring Concert at Bethlehem, 4 p.m., sanctuary



**The Political Jesus**  
April 27–28, 2018,  
East Lansing,  
Michigan

[www.westarinstitute.org/upcoming-events-calendar/eastlansing-2018](http://www.westarinstitute.org/upcoming-events-calendar/eastlansing-2018)

*(Contact Lily for more information)*

The Jesus of history resisted the political and social realities of his day. Early Christians did the same. Neither one was necessarily successful in their aims, but what do we know about their attitudes toward the economy, immigrants, and war? How did Jesus and emerging Christ communities express concerns for justice and peace? Looking at the world today, what would they say about American politics?

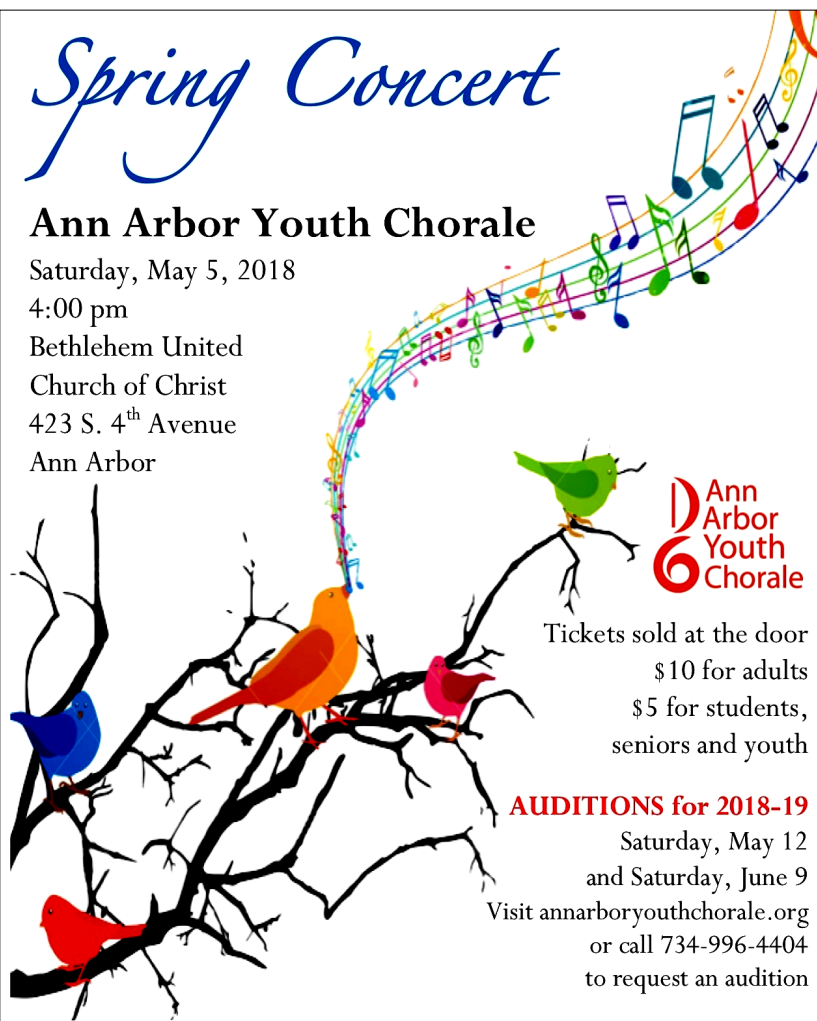
## Spring Concert

**Ann Arbor Youth Chorale**

Saturday, May 5, 2018

4:00 pm

Bethlehem United  
Church of Christ  
423 S. 4<sup>th</sup> Avenue  
Ann Arbor



**Ann Arbor Youth Chorale**

Tickets sold at the door  
\$10 for adults  
\$5 for students,  
seniors and youth

**AUDITIONS for 2018-19**

Saturday, May 12  
and Saturday, June 9  
Visit [annarboryouthchorale.org](http://annarboryouthchorale.org)  
or call 734-996-4404  
to request an audition

*(Continued from page 1)*

ples of Jesus. Gail, Katie, and Allison helped set the mood of the evening with music to open our hearts to receive the offerings of the Holy Spirit's grace.

On Good Friday, we journeyed to the cross in solidarity with Jesus and each other (at both the afternoon and evening services) as you, the laity, read the story of Christ's suffering and death upon a cross. After each reading describing Jesus' betrayal, pain, and abandonment, a candle was extinguished, as the sun set lower and lower, as the shadows encroached across the sanctuary. In the midst of our place of sanctuary, there was a trail of palm branches that only a few days ago were waved by children singing "Hosanna to Christ in the highest!" In the midst of the path of branches, soft candles flickered reminding us of the each step that the "Light of the World" would walk, as shouts of "crucify him" and whips fell upon his body. The shadows lengthened across the sanctuary as each passage reminded us of how Jesus' disciples retreated and disappeared into the shadows. Jesus died because of our sins, and in that way he also died for our sins, not as a substitution, but as an act of a love so great for others that he would not let the world's threats dissuade him from giving all that he had to give.

I am so proud of the incredible self-giving love of all of you who spent hours preparing for Palm Sunday, the Palm Sunday brunch, Maundy Thursday, Good Friday services (prep and cleanup for both), the Good Friday (12-hour) Vigil, creating the Stations of the Cross, music offerings, worship planning, Lenten studies, Sunday school and

the nursery, liturgy, sacristy and Altar Guild responsibilities, sound technicians, youth involvement, office volunteers, greeters, ushers (opening & closing), and for our first-class Bethlehem team of staff!

Now it is Easter Season and we are hearing the stories of Jesus' resurrection appearance to his disciples and others. Jesus seeks out those closest to him. They are still hiding in the shadows of fear; indeed, everything they are doing is a "flight response" to their fear. They have shut themselves into a room in an undisclosed location and have bolted the doors. No one and nothing is to be trusted or to be allowed to

break through their false walls of security. Mary Magdalene and Mary the Mother of Jesus have encountered Jesus in his resurrection body that is strangely different and yet completely real. Physically, Jesus seems like a stranger, and yet his presence is unmistakably the Jesus they knew with their hearts and souls. They recognize Jesus not by his face, but by his wounds, his words, and the peace that he is now sharing with them.

Thomas gets unfair criticism. Thomas's need to see Jesus and his wounds is no less what the other disciples needed. The other disciples did not believe either until they saw Jesus. Thomas's encounter with Jesus merely happens at Jesus' next appearance. Thomas does not recognize Jesus by his face so he proclaims that he will not see unless he can see and feel Jesus' wounds and remember Jesus' deepest wound was described as being forsaken and abandoned, not as the physical wounds. Jesus cries out and quotes Scripture (Psalm 22): "My God, My God, why have you abandoned (forsaken) me."





Physical wounds are not the deepest wounds; they are the wounds that attack our mind, heart, relationships, and spirits. Many a warrior or cancer patient has endured the wounds of the body but do not give up until their sense of trust or faith has been pulled out beneath them. Some can do multiple tours and battle but take their own life rather than admit they are afraid, lonely, are gay, or feel betrayed.

Those that I allow to become my spiritual mentors must have wounds and scars. I want to know where are your battle scars for standing up for what was right even when it meant standing up against your friends or those who are most loved? To stand up to one classified as an enemy takes less courage than to stand against those you most love and who are a part of your own inner circle. Show me where you have suffered for standing up for the vulnerable, the untouchables, the weak, the gentle, the meek, the immigrant (foreigner or alien in the Bible), and the hungry, the leper or Samaritan (LGBTQ, a person of different color or culture). Let me connect with the self-sacrificing wounds of the soldier who showed an act of mercy in combat, the police officer who testifies against the abuses of his best friends, the person who says in the midst of his buddies, "That joke is racist, you need to stop because you're better than that." The ones who say to a gossiping friend, "Stop, I love you, but I will not spread this unhealthy behavior. Go talk to the person face to face or just plain stop it!!"

As we live into the season of resurrection and new beginnings, let us die to the old unhealthy ways of fear, and tribe, and let us move to stand up each day in each situation, one at a time. In time, we gain confidence. In time, we look like Christ. In time, if we look like Christ, we will bear wounds, but because of those wounds of love and courage, others will see Jesus in us and in Bethlehem.

God loves us all with no take-backs!  
Let us live like it!

*Pastor John*



## Bethlehem Recognized as a 5 for 5 UCC Congregation (Again!)

*"Our Church's Wider Mission" always brings to my mind the hymn "The Church's One Foundation," probably because they share a poetic meter and the word "Church's."*

*Associating that old hymn with the UCC program isn't wrong. When we contribute to Our Church's Wider Mission (OCWM), we fund foundational work at all levels: in Associations, Conferences, the U.S., and globally. We help fund programs, resources, and tools needed to keep UCC churches strong, effective, and growing.*

*Bethlehem received an OCWM Certificate signed by John Dorhauer, the General Minister and President of the UCC, and by Campbell Lovett, our Conference Minister, thanking us for our 2017 contribution of \$12,500. Bethlehem's 2018 budget increased our giving to OCWM to \$14,000, the first increase in several years.*

*OCWM is one of five denominational mission areas to which UCC churches can contribute. The other four are Special Mission Offerings: One Great Hour of Sharing, Strengthen the Church, Neighbors in Need, and the Christmas Fund. Bethlehem received another certificate recognizing us as a "5 for 5 Congregation," meaning we contributed to each of these areas last year.*

*Our next scheduled 5 for 5 opportunity is Pentecost, May 20, when the "Strengthen the Church" offering will be taken. This offering supports the expansion of ministry and growth of UCC local congregations, helping the UCC fulfill its commitment of creating A Just World for All by investing in new ministries and practices to meet the emerging needs of local communities.*

*We are a generous church, and I am proud we see our mission as stretching throughout the world. Let's go for another 5 for 5 and increase our giving to each aspect!*

*John Samford*



## KROGER COMMUNITY REWARDS UPDATE

April is the time to renew your Kroger Community Rewards for Bethlehem. Food = Money! All shoppers must reenroll during the month of April in the Kroger Community Rewards Program to designate BUCC as their organization to receive funds. **Go to Kroger.com, click on Community, then Kroger Community Rewards, then sign in and update.** Questions? Contact Linda Young: 734-223-5105

Thank you to all who have signed up to help bring money to Bethlehem just by grocery shopping! Year after year, local schools, churches, and other nonprofit organizations will earn millions of dollars through Kroger Community Rewards. Kroger Community Rewards makes fundraising easy. All you have to do is shop at Kroger and swipe your Plus Card! Get started or reenroll today at **Kroger.com**.



Busch's renewal date is the first of the year. Church members need to go into their My Way account under Cash for Education and reaffirm their service organization for the year if they have not already done so.

## News from the Washtenaw Interfaith Round Table

### Reaching Across Differences: Conversations That Matter in Today's World

*(By popular request, we offer this course again.)*

*The political storm that has visited the United States over the past few years has exposed a number of social crises. One of these crises is our society's ongoing struggle to truly hear each other and to help each other discern what sits at the heart of our beliefs, our fears, and our desires for a wholesome life. What are some deep listening and inquiry practices that can bring us closer together rather than farther apart?*



The IRT invites you to come explore and practice conversations that will expand our ability to listen more deeply and discover what truly matters at the core of any conversation. How can we reflect each other's sacredness in ways that can help each of us see our true beauty and each other's heart's desire to thrive and live a blessed life?

- ♦ **Date and Time:** Tuesday April 3, 10, 17, and 24, 7-9 p.m.
- ♦ **Themes:** Four core attributes (trust, hope, love, and clarity/light)
- ♦ **Approach:** Self-examination, small and large group discussion (all materials provided)
- ♦ **Location:** Lord of Light Luther Campus Ministry, 801 S. Forest, Ann Arbor
- ♦ **Facilitator:** Rev. Susan King, IRT Co-Director
- ♦ **Cost:** \$40 (includes all materials) **Talk to Lily about Bethlehem covering your costs.**
- ♦ **Reservations:** Reserve a place by registering via email at [gbrides@umich.edu](mailto:gbrides@umich.edu)

Some have asked, "How do I talk with people who see life from such a different place from what I see it?" Others have said, "I just want to be a better listener." And still others wonder, "Are there better ways to connect with those who don't think like me, look like me, or practice like me?" For all of the above, this course is just right for you. [lirtwc.org/reaching-across-differences-conversations-matter-todays-world](http://lirtwc.org/reaching-across-differences-conversations-matter-todays-world) for more info.



## MEMORIALS & GIFTS

### GENERAL MEMORIAL FUND

Dona Nicholson 90<sup>th</sup> Birthday Honorarium  
Fritz Rentschler Memorial

### MUSIC/CHOIR FUND

Shirley Ann Hoskin Memorial

### RADIO FUND

Pauline Hawkins Memorial  
Fritz Rentschler Memorial

Gifts listed were received through  
March 31, 2018

### RADIO BROADCAST SPONSORSHIP

#### March 11

Sponsored by Sue Canfield in loving memory of her niece **Laura Ann Jaworowski** and her friend **Wilma Wahl** (both born on March 17) and her brother-in-law **Ron Jaworowski**.

#### March 18

Sponsored by Dindy and Mike Haab in honor of the 101<sup>st</sup> birthday of Dindy's aunt **Marion Seyfried**.

#### March 25

Sponsored by Bob and Jamie Dylenski in memory of Jamie's grandmother **Bertha Nachtigal Hartley**.

## PARISH RECORDS

### MEMBER DEATHS

**M. Pauline Hawkins**

Died on March 10, 2018



### NEW MEMBERS

**K'Lynne McKinley**  
and  
**Sarah McKinley**

*A warm Bethlehem welcome to  
K'Lynne and Sarah and their children,  
Noah, Lyrik, and Salem.*



## EDUCATIONAL SCHOLARSHIPS

***The Bethlehem 2018 Scholarship Application will be available on our website April 24, 2018. Deadline for filing is May 31.***

Members of Bethlehem are eligible for educational scholarships. These are open to any qualified member attending full-time at an approved, accredited university, college, or seminary at the undergraduate or graduate level.

Applications may be obtained at the church office or by emailing [CarolLeyschock@Bethlehem-UCC.org](mailto:CarolLeyschock@Bethlehem-UCC.org). They can also be downloaded from the website, [bethlehem-ucc.org](http://bethlehem-ucc.org) (click on Education in the left column).



February 2018	Year to Date	YTD Target	2018 Budget
Offerings & Income	\$96,384	\$74,455	\$446,732
Expenses	\$99,412	\$89,575	\$537,454
Net	(\$3,028)	(\$15,120)	(\$90,722)

## Bethlehem UCC All-Church Cleanup Day SATURDAY, APRIL 21, 9:00 am–12 noon

- Church grounds cleanup (rake & fertilize).
- Fellowship Hall pantry (groups organize shelves).
- Boiler room cleanup—remove unused items and move outside tables/chairs to the backyard.
- Organize outside storage sheds.
- Clean out old paint and lights storage room (basement).
- Clean 3 kitchens (Fellowship Hall, Schmale Lounge, Youth Room).
- Clean Education rooms as needed (toys, etc.).
- Clean artificial plants in the building.
- Clean artwork in the sanctuary.

PLEASE SIGN UP ON THE BOARD BY THE CHURCH OFFICE.  
Questions? Contact Tom Ziesemer.



## RADIO BROADCAST SUPPORT AND SPONSORSHIP

Please remember that a lot of folks count on the weekly  
Radio Broadcast of our 10 o'clock service.

This program is funded by weekly radio sponsorships,  
memorials, and special donations.



*Have you sponsored a Radio Broadcast lately? Are you looking for a way to honor or remember a friend or family member? A weekly Radio Sponsorship is \$230. In addition, general donations of any amount are appreciated. Thank you for supporting this important ministry!*

1. Pick a date you want to sponsor.
2. Sign up on the bulletin board in the office hallway, or call the office at **734-665-6149**.
3. You can even donate online at [bethlehem-ucc.org](http://bethlehem-ucc.org).
4. Tell the office how you want your sponsorship listed in the bulletin and read on-air.

## Planning Ahead for Summer!

### 2018 Bethlehem Church Tigers Outing, July 29

We have a block of excellent seats reserved for the Tigers game against the Cleveland Indians on Sunday, July 29. Scheduled game time is 1:10 p.m. We plan to depart from the church following the 10:00 a.m. service and return to Bethlehem right after the game.

Your \$45 ticket gets you a ride to and from Comerica Park in a luxury coach, your game ticket, lunch and beverages aboard the bus on the way to the game, other special items, and fantastic fellowship.

Contact Brian Paton to make your reservation: [bapaton@hotmail.com](mailto:bapaton@hotmail.com) or 734-635-9204.  
We have one bus with 52 available seats; your payment reserves your seat.



BETHELEHM UCC

MARCH 2018

# Outreach Ministry

Service is a community-wide reality at Bethlehem UCC!



**Reaching Out** to our members, community, country, and the world through support and service is one of Bethlehem's Core Values. Bethlehem is an active church that reaches out to the community in a spirit of love, justice, and fellowship. The Outreach Ministry Team supports the congregation in fulfilling this Christian responsibility.

**JOIN US!** Contact information at <https://bethlehem-ucc.org/outreach/>

1

## ALPHA HOUSE/IHN

Prepare and serve dinner for families at Alpha House; stay for the fun kid's activities

2

## FOOD GATHERERS

Prepare meals at the Community Kitchen; donate fresh produce and non-perishables

3

## PEACE NEIGHBORHOOD CENTER

Serve after school snacks; distribute fresh produce



### Upcoming Opportunities

June 7  
August 9  
October 7



### Upcoming Opportunities

April 1  
May 6



### Upcoming Opportunities

April 24  
May 22





## March For Our Lives



## Palm Sunday at Bethlehem







**Good Friday  
&  
Easter Sunday  
at Bethlehem**



# *2018 Easter Gifts, in Memory of*



## **Tulip in Memory of:**

Jackie Opperman  
Jean and Carl Raab  
Our Son, David Alber  
Our Parents  
Rose and Walter Buss and John and Lois Bushart

## **Hyacinth in Memory of:**

Shirley and Robert Lindstrom  
Carl and Helen Stoll  
Gene Slotten  
Lucie Port  
Johannes Port  
Elma Wanya

## **Hydrangea in Memory of:**

David and our parents  
Kathryn Bethune

## **Lily in Memory of:**

Rev. Robert Opperman  
Fred Harwood  
David Zahn  
Norman and Helen Grob  
Frederick J. Seyfried  
Nancy Lynn Seyfried  
Mom and Dad, Erwin and Luella Weber

Our brother, Daniel E. Weber

Lloyd and Gerry Seyfried  
Evelyn Gaide Kastner  
Martha Holliday  
William and Aletta Kulenkamp

## **Radio Broadcast Fund in Memory of:**

Ray and Marie Zahn  
Gardner Family: Eleanor, Ernest, Robert,  
Ernie, Don and John  
Burt and Betty Lutz  
Joseph, Laura and John O'Reilly  
Lloyd and Gerry Seyfried

## **Given by:**

Judy and Dimitri Coucouvanis  
Mary Jean and Chuck Raab  
Marg and Gene Alber  
Roy and Sue Muir  
Chuck and Pat Buss

## **Given by:**

Pam Widmayer and Fred Castenholz  
Their Family  
Cresson, Karen, CJ and Jenna Slotten  
Evelyn and Fritz Port  
Evelyn and Fritz Port  
Evelyn and Fritz Port

## **Given by:**

Warren and Barbara Fisher  
Bryan, Kim and Jenni Castillo

## **Given by:**

Judy and Dimitri Coucouvanis  
Kaye Harwood  
Kaye Harwood  
Norma and Conrad Foster  
Marion Seyfried  
Marion Seyfried  
Jim and Joann Weber and Norm and  
Kathy Cole and Family  
Jim and Joann Weber and Norm and  
Kathy Cole and Family  
Marty and Laura Seyfried  
Evelyn and Fritz Port  
Jacquie and Jay Katz  
Paul and Nancy Thibault

## **Given by:**

Ken and Judi Tappe  
Harriett Holzapfel  
  
Jim and Mary Lutz  
Pat O'Reilly and Shannon O'Reilly  
Marty and Laura Seyfried



## *2018 Easter Gifts, in Memory of (continued)*



### **Other Funds of Choice:**

Chapel renovation or enhancement  
Property Improvement  
Cemetery Maintenance  
Property Improvement

Building Fund

Cemetery Trees

Property Improvement

Property Improvement

### **In Memory of:**

Virginia Seitz  
Cal and Eleanor Seyfried  
John and Selma Haab  
Oscar, Martha, and  
Ken Holzapfel

Rose and Walter Buss,  
Cpl. Walter Buss Jr. and  
Charles W Buss

My mother,  
Virginia Reppenhagen

Ron and Julia Kennedy

Eldean and Lillian Hanson

### **Given by:**

Mike and Harriette Ehnis  
Dindy and Mike Haab  
Mike and Dindy Haab  
Harriett Holzapfel

Chuck and Pat Buss

Susan Irwin

David Kennedy and  
Dick Hanson Families  
Dick Hanson Family

## *2018 Easter Gifts, in Honor of*

### **Tulip in Honor of:**

James Haab  
Our Families  
Brecken, Ronan and Evalee

### **Given by:**

Bapa and Grammy  
The Kennedy Family  
Grandpa and Grama

### **Hyacinth in Honor of: Given by:**

Sophie Boggs  
Sandy and Sun-Kee Kim  
Karen Slotten  
Marie Slotten

Grammy and Bapa  
Cresson, Karen, CJ and Jenna Slotten  
Cresson, CJ and Jenna Slotten  
Cresson, Karen, CJ and Jenna Slotten

### **Hydrangea in Honor of:**

Jillian Boggs  
Our Families  
Mary Kay Little  
Jeanne Opperman

### **Given by:**

Grammy and Bapa  
The Kennedy Family  
Bryan, Kim and Jenni Castillo  
Judy and Dimitri Coucouvanis

### **Lily in Honor of:**

Logan Haab

### **Given by:**

Bapa and Grammy

### **Radio Broadcast Fund in Honor of:**

Harriett Holzapfel

### **Given by:**

The Family

### **Chapel renovation/enhancement in Honor of:**

Arlene Finkbeiner and Betty Hills

### **Given by:**

Mike and Harriette Ehnis



### ***Covenant of Welcome***

***We, at Bethlehem United Church of Christ, declare ourselves an Open and Affirming congregation where we celebrate Christ's extravagant love. We covenant with God and one another to welcome the diverse tapestry of all people, no matter their age, race, nationality, ethnicity, economic circumstance, marital or family status, physical or mental ability, sexual orientation, gender identity, or gender expression. We invite everyone—believers and questioners, seekers and skeptics—to share their gifts in the life, leadership, ministry, fellowship, worship, sacraments, responsibilities, and blessings of our congregation.***

### **Bethlehem Church—Our Core Values**

- ♦ **Growing** spiritually in our faith journey together
- ♦ **Worshipping** together to seek and share God's love
- ♦ **Connecting** with God and each other in a supportive, nurturing way
- ♦ **Reaching out** to our members, community, country, and the world through support and service

### **Bethlehem's Ministry Team**

Rev. John Kennedy

Pastor

Rev. Orval L.E. Willimann

Pastor Emeritus

Lily Tinker Fortel

Minister of Spiritual Growth  
and Development

Carol Leyshock

Parish Administrator

Betty Clark

Financial Administrator

Donna Whitney

Parish Secretary

Thomas Burton

Interim Director of Music

Gail Jennings

Organist

Jim Rowan

Director of Handbells

The **Visitor**  
is printed 12 times a year.

### **Our Mission**

To worship God,  
to learn and live the  
Word of God,  
to engage in Christian  
fellowship and service,  
to invite others to join us  
on our faith journey in the  
ministry of Jesus Christ.