

Bethlehem United Church of Christ

Refrigerator Page June 29, 2025

Sun., June 29	Third Sunday after Pentecost
10:00 am	Worship Service, In-Person, Phone Stream & Live Stream
10:00 am	Sunday School during worship
11:15 am	Coffee Hour, Fellowship Hall
Mon., June 30	Office Closed
Tues., July 1	Office Open 9:00 am—2:00 pm
Wed., July 2	Office Open 9:00 am—2:00 pm
12:00 pm	Community Crafters, Lounge
Thur., July 3	Office Open 9:00 am—2:00 pm
Fri., July 4	Office Closed— Independence Day
Sat., July 5	Office Closed
Sun., July 6	Fourth Sunday after Pentecost
10:00 am	Worship Service, In-Person, Phone Stream & Live Stream
10:00 am	Sunday School during worship
11:15 am	Coffee Hour, Fellowship Hall

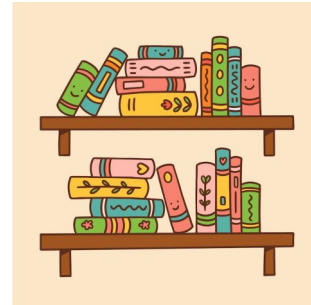
BUCC Book Sale

A Book Sale is being held during the month of June in the Library.

Books will be 4 for \$1 !!!

Please come select your summer reading books! There is a wide variety of novels and children's books to choose from.

Payment can be placed in the grey box near the door.



Donations of novels and children's books are always welcome.

Textbooks, self-help, cookbooks, non-fiction or spiritual books can be donated to the Ann Arbor District Library or Share House.



Happy Birthday Happy birthday to the following Bethlehem members who are celebrating birthdays this week:

Jennifer V. Misty F. Elizabeth B. Janet K.
Terri T. Betty H. Lori S.

Easy sign up!

The Bethlehem website has been updated to include easy access to sign up for opportunities here at church. On the front page, at the bottom, are one click buttons that take you to sign up sheets. You can add your name to be a [Liturgist](#), provide [Flowers for Sunday Worship](#), [Adopt a Coffee Hour](#), or [Sponsor a Live Broadcast](#).

If you do not have access to a computer or need assistance please call the church office at 734-665-6149

Holy Spirit Calling

You might not think of a technical database as a conduit for Spirit-filled discernment, but the United Church of Christ's MESA team (Ministerial Excellent, Support, and Authorization) can tell you otherwise.

Strengthen the Church funds help equip MESA to innovate and refine a tool like Ministry Opportunities. Positions listed on Ministry Opportunities include not only pastoral positions of all varieties but also non-pastoral church positions, wider church openings, non-pastoral ministries such as chaplaincies, and non-UCC settings that are widening their search. This puts into practice the idea that God's call can be great and wide.

Your support of the Strengthen the Church offering equips leaders, funds new churches, and fosters innovation. The offering is a celebration of who we are as church together, as money is shared between the National ministries of the United Church of Christ as well as with Conference settings.

Offering envelopes are in your annual packet

To donate online click [HERE](#)

Collection will end June 30, 2025

The Refrigerator Page and Email Blast

Submissions are **due by 5:00 pm Tuesday** each week.

Articles need to be complete with all details and contact information.

August Visitor Deadline

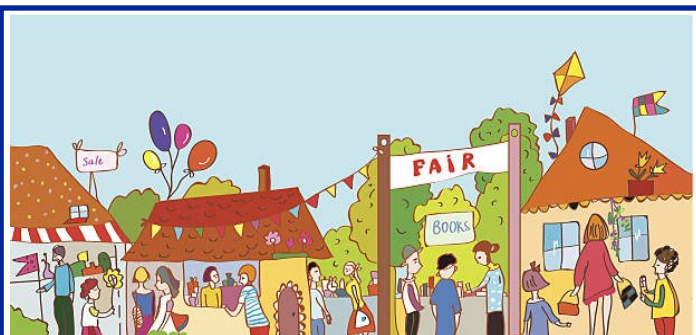
Due date for August newsletter submissions is July 15th.

Please email submissions to:

churchoffice@bethlehem-ucc.org

Articles may be edited for space and clarity.

Pray for Peace



Art Fair Parking Fundraiser

HELP NEEDED!!!

******* July 17 18 & 19*******

Adults and youth needed for each shift:

8:30 am - 11:30 am

11:30 am - 2:30 pm

2:30 pm - 5:30 pm

Click [HERE](#) to sign up!



Building Safety and Security Reminder

The safety and security of everyone using the church building is very important to us.

When entering the building—whether using the buzzer system or a key—please do **not** allow unknown individuals to enter with you.

This helps ensure that each tenant, including Groundcover and others, has the ability to manage access to their own spaces and be aware of who is entering.

If approached, you can kindly say:

"I'm sorry, I can't let you in. Please contact the person or organization you're here to see so they can assist you."

Thank you for your understanding and cooperation in keeping our building secure for all.